

## How can you give feedback on the service?

We are always looking for ways to improve and we would like to hear from you about your experience.

Receiving your feedback is important to us as it ensures that we can continue to make improvements for the young people using our service. It would be really helpful if you could complete our survey:

[www.surveymonkey.co.uk/r/FocusT](http://www.surveymonkey.co.uk/r/FocusT)

To leave a compliment, or to make a comment or complaint, please contact us on:

[customer.servicesSWYT@nhs.net](mailto:customer.servicesSWYT@nhs.net)

Wetherby Young  
Offenders' Institute (YOI)

# Making a referral to the forensic CAMHS focus team

# 01924 316384

## Who are we?

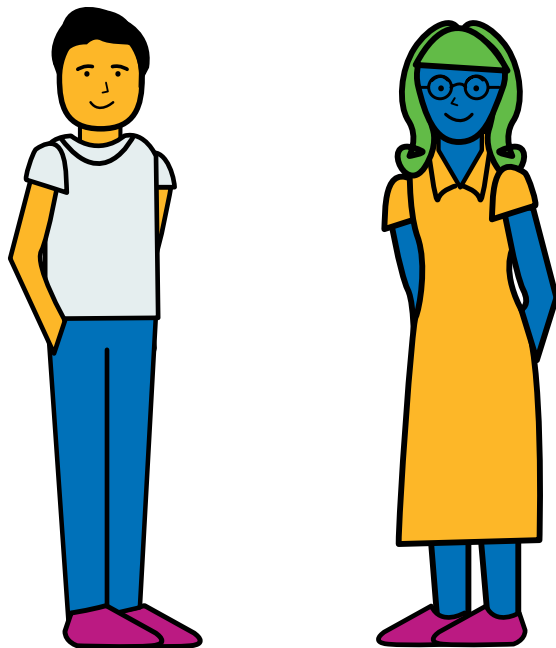
The forensic CAMHS focus team is a service that helps children who have displayed or are displaying harmful sexual behaviour. This may relate to current or previous concerns.

We are a team of clinicians from a range of professional backgrounds including social workers, psychologists, nurses and counsellors.

## Why refer to us?

Children may be referred if they have been convicted of a sexual offence, or if there are concerns in relation to sexual behaviours which have not resulted in conviction. Additionally, we can work with children that have displayed problematic or harmful sexual behaviours since coming into custody.

We can also help the child move on from their harmful behaviour.



## Who can refer?

We accept referrals from all professionals working with the child.

Referrals are taken over the phone, and we will arrange a mutually suitable time for one of our clinicians to take the referral. You will need to ensure that the below information is available at the time of referral:

- Detail of the harmful sexual behaviour (offence detail or detail of all allegations)
- Background information about the child
- The length of the sentence the child received
- Any assessments/reports which may have already been written, to include:
  - » Pre-Sentence Report
  - » AssetPlus
  - » Psychology/Psychiatry assessments
  - » Previous risk assessments
  - » Social care information (if relevant)

You will also need to confirm that you have obtained consent from the child.

## What happens after the referral?

Each referral will be discussed at the forensic CAMHS clinical team meeting, which takes place on a weekly basis. We refer to this as 'triage' of referrals. If your referral is not accepted by the service you will receive a written response detailing the rationale for this and any initial advice from the service to support your work with the child.

A decision will be made as to whether the child requires consultation, assessment or intervention.

Following each stage of work, a report will be provided and shared with the child, family and relevant professionals.