

How can you give feedback on the service?

We are always looking for ways to improve and we would like to hear from you about your experience.

Receiving your feedback is important to us as it ensures that we can continue to make improvements for the young people using our service. It would be really helpful if you could complete our survey:

www.surveymonkey.co.uk/r/FocusT

To leave a compliment, or to make a comment or complaint, please contact us on:

customer.servicesSWYT@nhs.net

Adel Beck Secure
Children's Home

Making a referral to the forensic CAMHS focus team

01924 316384

Who are we?

The forensic CAMHS focus team is a service that helps children who have been placed in Adel Beck Secure Children's Home and who might have displayed, or are displaying, high-risk behaviours towards others. This might include harmful sexual behaviour, violence, fire setting, or anything else which has posed a risk to other people.

We are a team of clinicians from a range of professional backgrounds including social workers, psychologists, nurses and doctors.

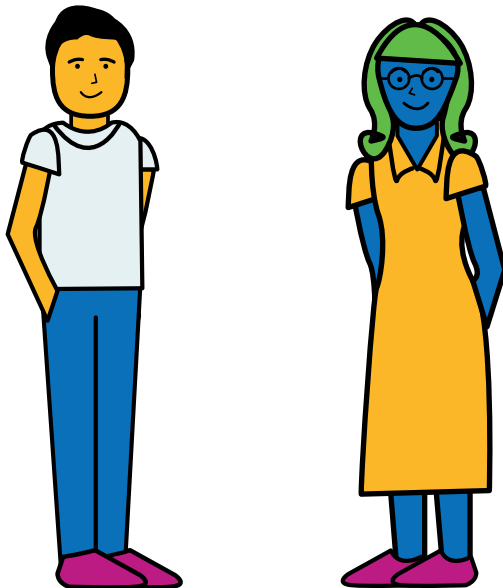
Why refer to us?

Children may be referred if they have been convicted of an offence or if there are concerns relating to high-risk behaviours towards others, which may not have resulted in a conviction.

Additionally, we can work with children who might have displayed risky behaviours since moving to Adel Beck Secure Children's Home.

We can offer support, advice and guidance to professionals, in addition to working directly with young people.

We can also help the child move on from their harmful behaviour.



Who can refer?

We accept referrals from all professionals working with the child.

Referrals are taken over the phone, and we will arrange a mutually suitable time for one of our clinicians to take the referral. You will need to ensure that the below information is available at the time of referral:

- Detail of the risk behaviour (offence details, current reports or allegations)
- Background information about the child
- The length of sentence the child received or length of time they are expected to remain within Adel Beck Secure Children's Home
- Any assessments/reports which may have already been written, to include:
 - » Pre-Sentence Report
 - » AssetPlus
 - » Psychology/Psychiatry assessments
 - » Previous risk assessments
 - » Social care information (if relevant)

You will also need to confirm that you have obtained consent from the child.

What happens after the referral?

Each referral will be discussed at the forensic CAMHS clinical team meeting, which takes place on a weekly basis. We refer to this as 'triage' of referrals. If your referral is not accepted by the service you will receive a written response detailing the rationale for this and any initial advice from the service to support your work with the child.

A decision will be made as to whether the child requires consultation, assessment or intervention.

Following each stage of work, a report will be provided and shared with the child, family and relevant professionals.