

## Definitions:

**Sexual assault:** Intentional touching of another person of a sexual nature where the other person does not consent to the touching and the individual does not reasonably believe that they consent.

**Sexual consent:** Where an individual has the freedom and capacity to agree to sexual activity with other persons. It is important to note that individuals with mental health conditions may appear to consent to activity, but may lack capacity due to their mental health condition. activity.

**Sexual wellbeing:** Feeling and being sexually safe in acute mental health inpatient environments, including being free from unwanted sexual activity, sexual harassment and sexual assault.

**Sexual harassment:** Any unwelcome or unwanted sexual behaviour that makes the individual feel offended, humiliated or intimidated This includes unwelcome sexual advances, unwelcome requests for sexual conduct (including staring, leering, and suggestive comments/jokes).

**Sexual incidents:** Any behaviour of a sexual nature that is unwanted, or makes another person feel uncomfortable or afraid. It also extends to being spoken to using sexualised language or observing other people behaving in a sexually disinhibited manner, including nakedness and exposure.

**Sexual safety:** Defined as feeling safe from any unwanted behaviour of a sexual nature, as defined in sexual incidents (above).

### Your feedback is welcome

We invite you to share any comments, compliments, concerns or complaints you have about our service. Please speak to a member of staff or contact our Customer Services team on 0800 587 2108. If you would like help understanding this information, please also contact us on this number.

JOB NO 0882 DEC18



## Sexual safety

While you are with us as an inpatient we want you to feel safe and supported, free from abuse, harm and harassment.

Included in this is your sexual wellbeing and sexual safety.

Whilst on the inpatient ward, you will be with other service users, who, as a feature of their mental ill health can at times act in disinhibited ways.

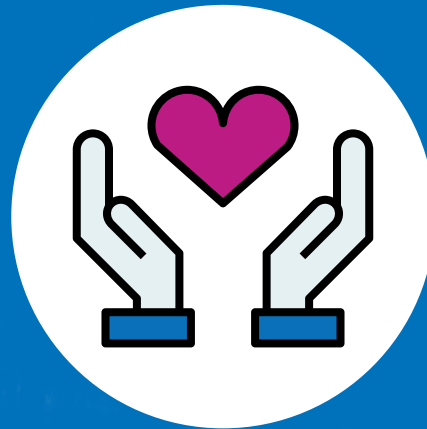
The person may act in a way that may be inappropriate either towards others or you in a sexual manner.

Although the behaviour may be an aspect of the person's illness at that time, staff can help to manage these behaviours with that person. As a result there should not be an impact on you or others.

If you are affected by the actions of others this needs to be reported to a staff member so that they can support you and that person.

If the person who is behaving in an inappropriate manner is a member of staff, visitor or other, this needs reporting to the ward manager.

**Whilst on the ward it is important that you feel safe and that you understand your sexual wellbeing matters to us.**



## What we will do as staff:

We will be vigilant and take action if we observe any of the behaviours described in the leaflet

We will support you during your time on the ward and adhere to our policies regarding appropriate boundaries .

**We will listen and take all concerns raised with us seriously**

We will take action appropriately, this may include involvement of local authority, safeguarding team and Police.

Please talk to us, the staff on the ward, if you have any concerns have experienced or witnessed any of the issues contained in this leaflet.