

# Our Trust priorities

2022/2023



South West  
Yorkshire Partnership  
NHS Foundation Trust

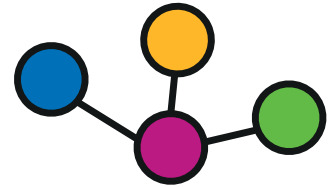
IMPROVE HEALTH



Ensure that **equality, involvement and inclusion** is central to everything we do to reduce inequalities, tackle stigma and eliminate discrimination



Support **social responsibility and sustainability** in the Trust and our communities

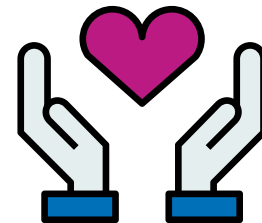


Work in **partnership at System and Place** to improve the health of our communities

IMPROVE CARE



**Deliver safe care** including our quality priorities to improve co-production of care plans and risk management

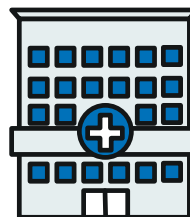


**Continually improve the care** we provide, ensuring it is responsive, inclusive and timely

IMPROVE USE OF RESOURCES



**Spend money wisely** and increase value

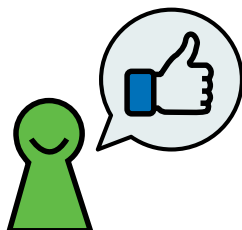


**Use our estate** to enable effective ways of working to support staff and deliver best care



**Use digital approaches** to deliver best care and support to service users, carers, staff and the wider community

GREAT PLACE TO WORK



Make SWYPFT a **great place to work**, supporting staff and addressing workforce challenges

**Underpinned by #allofusimprove, using quality improvement to ensure we learn from organisational change.**

If you require a copy of this information in any other format or language please contact your line manager.



With **all of us** in mind.

Understanding equality, and addressing inequality through inclusive involvement