



**South West
Yorkshire Partnership**
NHS Foundation Trust

South West Yorkshire Partnership NHS Foundation Trust overview

With **all of us** in mind.

- We provide services to **1.2 million** people across **Barnsley, Calderdale, Kirklees and Wakefield**.
- And a range of services for health and wellbeing in the rest of **South and West Yorkshire**, including Yorkshire Smokefree and Liaison and Diversion.
- We also provide secure forensic services to the whole of **Yorkshire and the Humber**.
- We employ around **4,800 staff** and have a budget of **£270m**.
- As a Foundation Trust we have over **13,250 members**, including staff.

How many contacts we make each month:

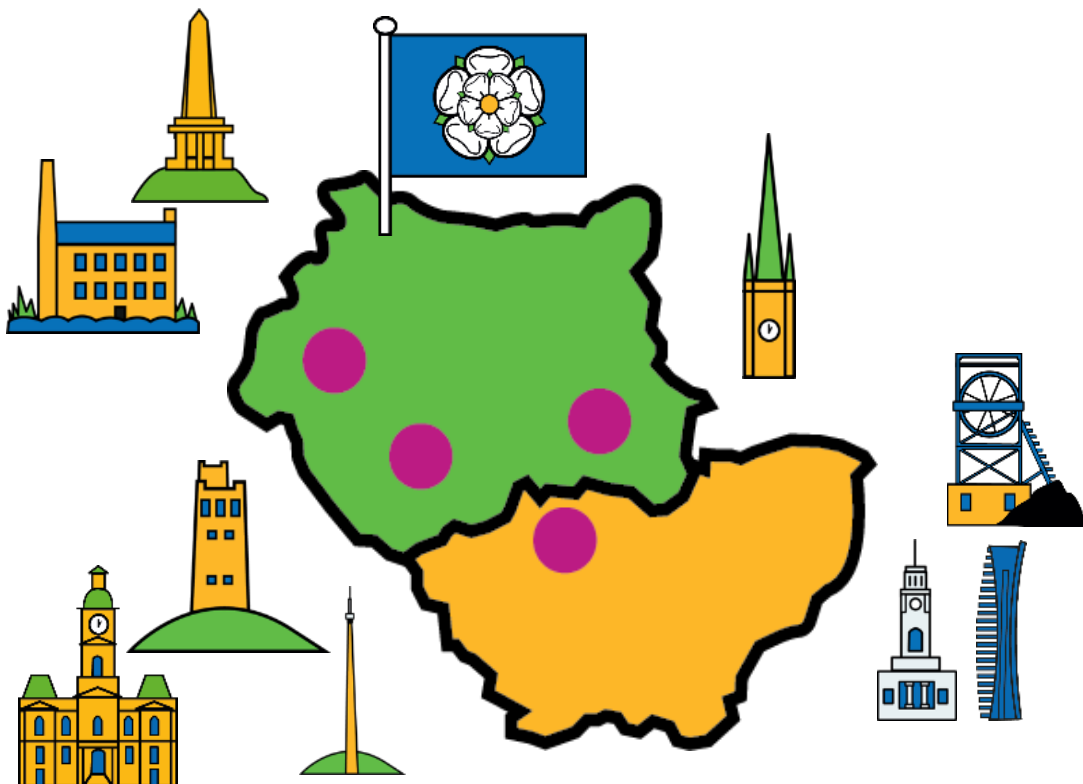
38,000	mental health
3,500	learning disabilities
6,300	CAMHS
6,250	community services
26,450	long-term conditions
2,000	children's services
1,350	health and wellbeing

With **all of us** in mind.

The importance of place



South West
Yorkshire Partnership
NHS Foundation Trust



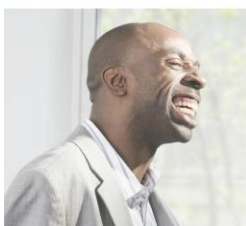
We are leading or partners in several
Alliances and provider Collaboratives

We are a strong partner in South
Yorkshire and West Yorkshire ICS

Opportunities in SYB Alliance

- Improve services- specialist
- Improve care- collective focus on health inequalities in our places and integrated pathways
- Workforce
- Share learning and innovate including research
- Stronger collective voice and influence across SYB
- Prevention

With **all of us** in mind.



Our vision

To provide outstanding physical, mental and social care in a modern health and care system

Our mission

We help people reach their potential and live well in their community

Our values

We put the person first and in the centre

We know that families and carers matter

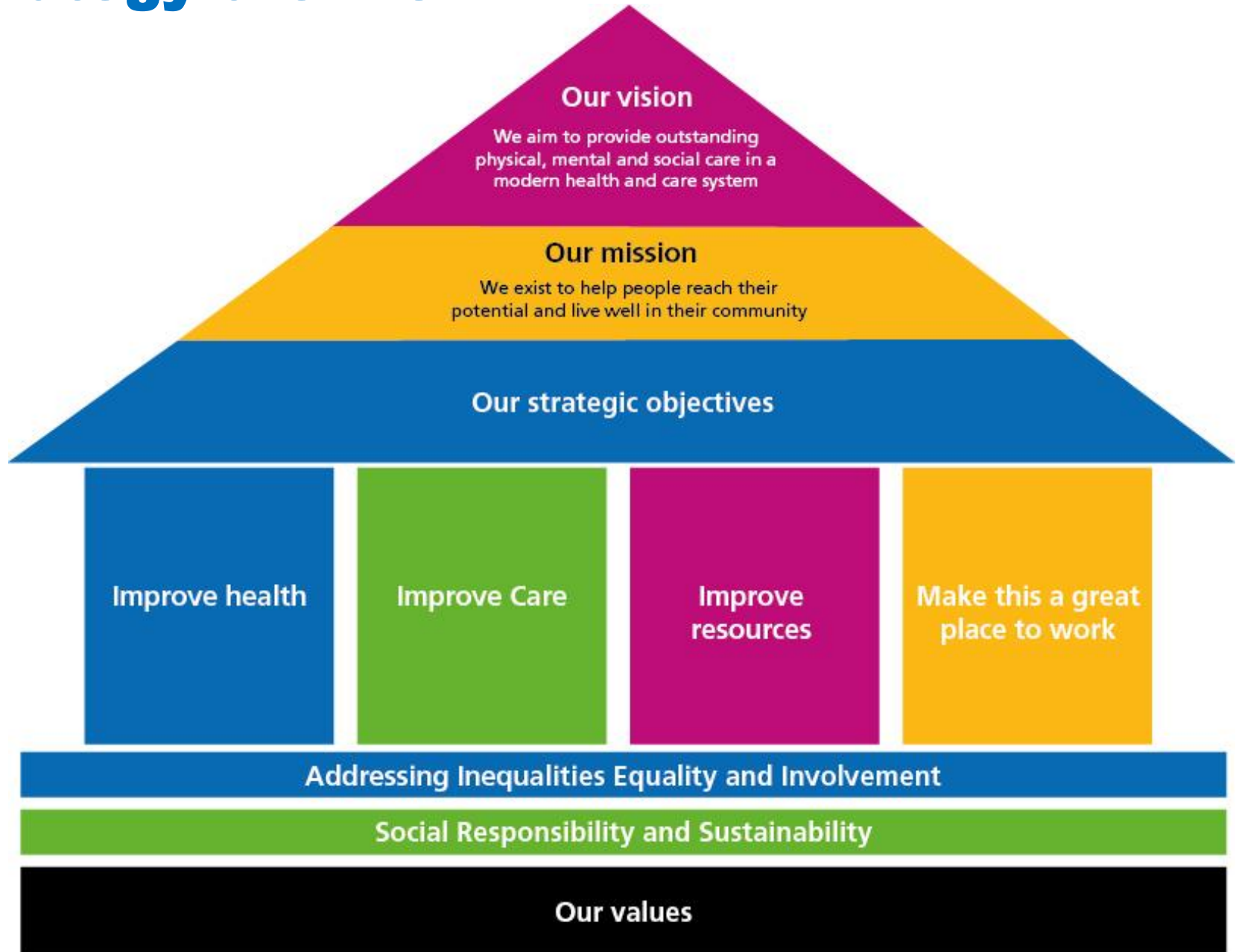
We are respectful, honest, open and transparent

We improve and aim to be outstanding

We are relevant today and ready for tomorrow

With **all of us** in mind.

Strategy overview



Strategy overview



Our strategic ambitions

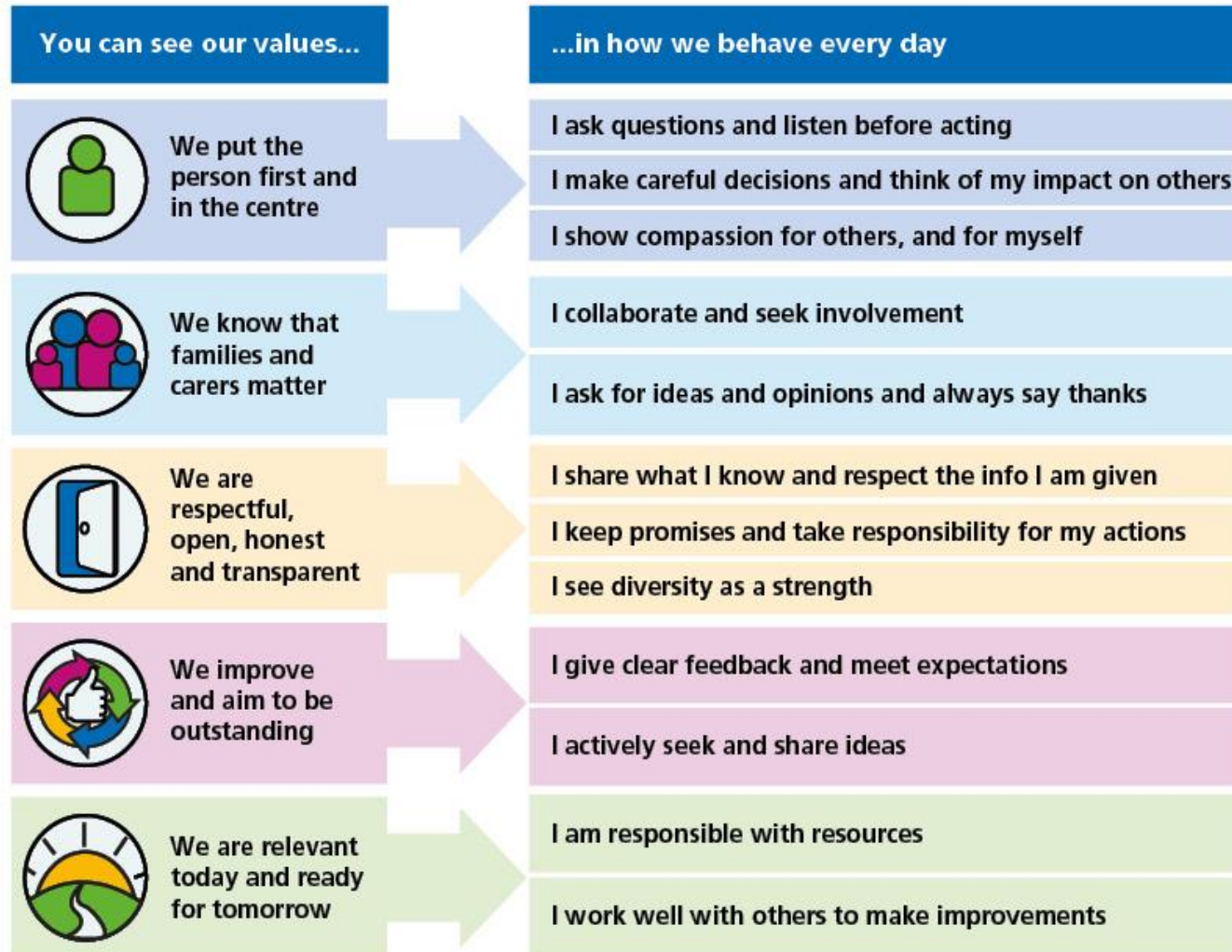


South West
Yorkshire Partnership
NHS Foundation Trust

- A **regional centre of excellence** for learning disability, specialist, and forensic mental health services
- A **trusted provider of general community and wellbeing services delivering integrated care**
- A **strong partner in mental health and learning disability service** provision across South Yorkshire and West Yorkshire
- A **trusted host or partner** in our four local **integrated care partnerships**
- A **compassionate and innovative organisation** with **equality** co-production, recovery and creativity at its heart

With **all of us** in mind.

Values into behaviours

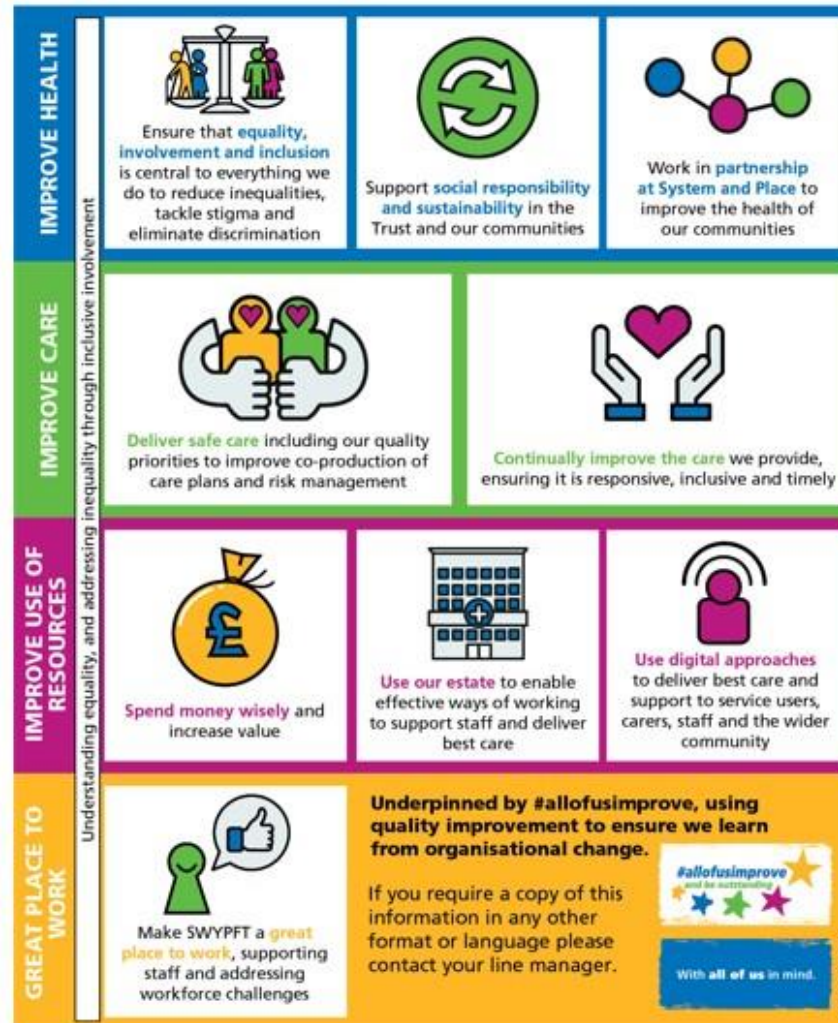


With **all of us** in mind.

Our priorities 2022-23



South West
ire Partnership
NHS Foundation Trust



With **all of us** in mind.

A great place to work



South West
Yorkshire Partnership
NHS Foundation Trust



Challenges

- Workforce
- Meeting growing demand and acuity
- Capacity to transform and integrate services



With **all of us** in mind.