



Bretton Centre



Ensuites & Improvements



With **all of us** in mind.



**South West
Yorkshire Partnership**
NHS Foundation Trust

A large circular graphic composed of numerous blue brushstrokes of varying lengths and directions, arranged in a circular pattern around a central white circle.

Information sharing with families & carers

With **all of us** in mind.

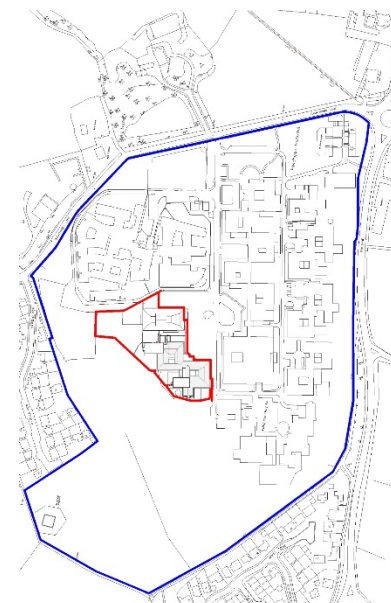
Bretton Centre

Why are works needed:

- No access to Ensuites
- Limited lines of sight
- No Extra Care area
- Bariatric/assisted bedrooms needed
- Improved Infection Prevention & Control Standards
- Privacy & Dignity Improvements

What are we doing?

- Extensions to enable footprint for Ensuite Bedrooms
- Extensions to provide Extra Care Area & Improved Seclusions
- Improved lines of site
- Enhanced grounds area
- Phased development over 19 months



With **all of us** in mind.

Bretton Centre - Plan as existing.

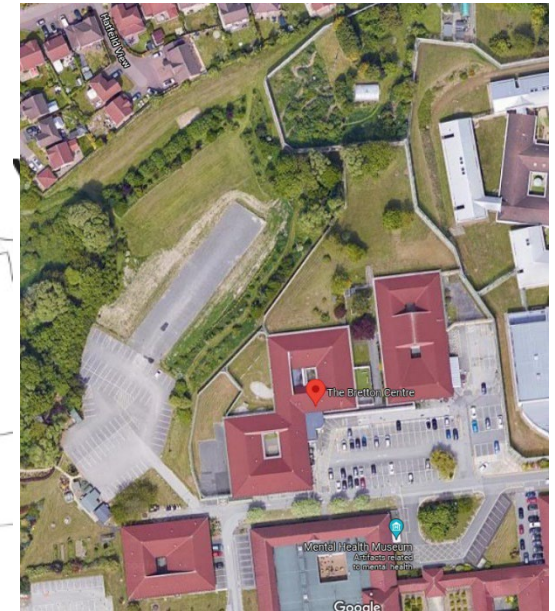


With **all of us** in mind.

Bretton Centre - Plan as proposed.

Legend:

1. Main entrance
2. Existing hard standing / car parking area
3. Proposed fire escape to new extension
4. Existing perimeter fence treatment
5. Tiered screen / buffer planting
6. Realigned external social space
7. Resurfaced access route
8. Resurfaced access route to northern external spaces
9. Southern courtyard
10. Northern courtyard
11. Western seclusion garden
12. Eastern seclusion garden
13. Growing garden
14. Stepped access from lower building level to upper landscape
15. Pedestrian access route from atrium space
16. Reinforced grass space for fire tender access and parking
17. 1:21 slope from lower building level to upper landscape
18. Social / gathering focal space with potential shelter structure
19. Meandering 'wander loop' / exploration route
20. Stepping stone route
21. Small informal seating spaces
22. Low mounded landforms
23. Visual focus / boulder formation
24. Orchard trees
25. Proposed retaining wall to building extension
26. Proposed fence line from building extension
27. Relocated greenhouse / shed
28. 1m wide 'stand-off' / search zone from perimeter fence



(iteriad)

Bretton Centre – Proposed Landscape design.



With **all of us** in mind.



With **all of us** in mind.



With **all of us** in mind.



What does this mean for me and my loved one?



- 10 service users will move to an empty ward - Gaskill at Newton Lodge
- Access to therapy/activity spaces within Newton Lodge
- Run as a low secure ward keep current consultant team
- 21 service users remain on Bretton Centre
- Service user moves for each phase into a new area
- Restricted access to outside space within the Bretton fence line

An orange L-shaped graphic with a distressed, hand-painted texture.

Questions??

Do you have any questions for us?

A purple L-shaped graphic with a distressed, hand-painted texture.A blue L-shaped graphic with a distressed, hand-painted texture.A blue rectangular graphic with a distressed, hand-painted texture.

With **all of us** in mind.



Contact Details



- Carol Harris by email carol.harris@swyt.nhs.uk or by phone 01924 316298.
- Sally Ironfield, the Trust's Project Manager for the scheme, by email at sally.ironfield@swyt.nhs.uk or by calling 07826 513939.
- Sue Threadgold, the Deputy Director of the service by email at sue.threadgold1@swyt.nhs.uk or by calling 07798 694796.





How to keep involved

Future updates will be posted on the Trusts website. This will be updated quarterly with progress photos and other relevant information.

If you wish to be informed directly of further developments please provide your email contact details to :

<https://www.surveymonkey.co.uk/r/KRCTHBQ>



South West
Yorkshire Partnership
NHS Foundation Trust

With all of us in mind.