



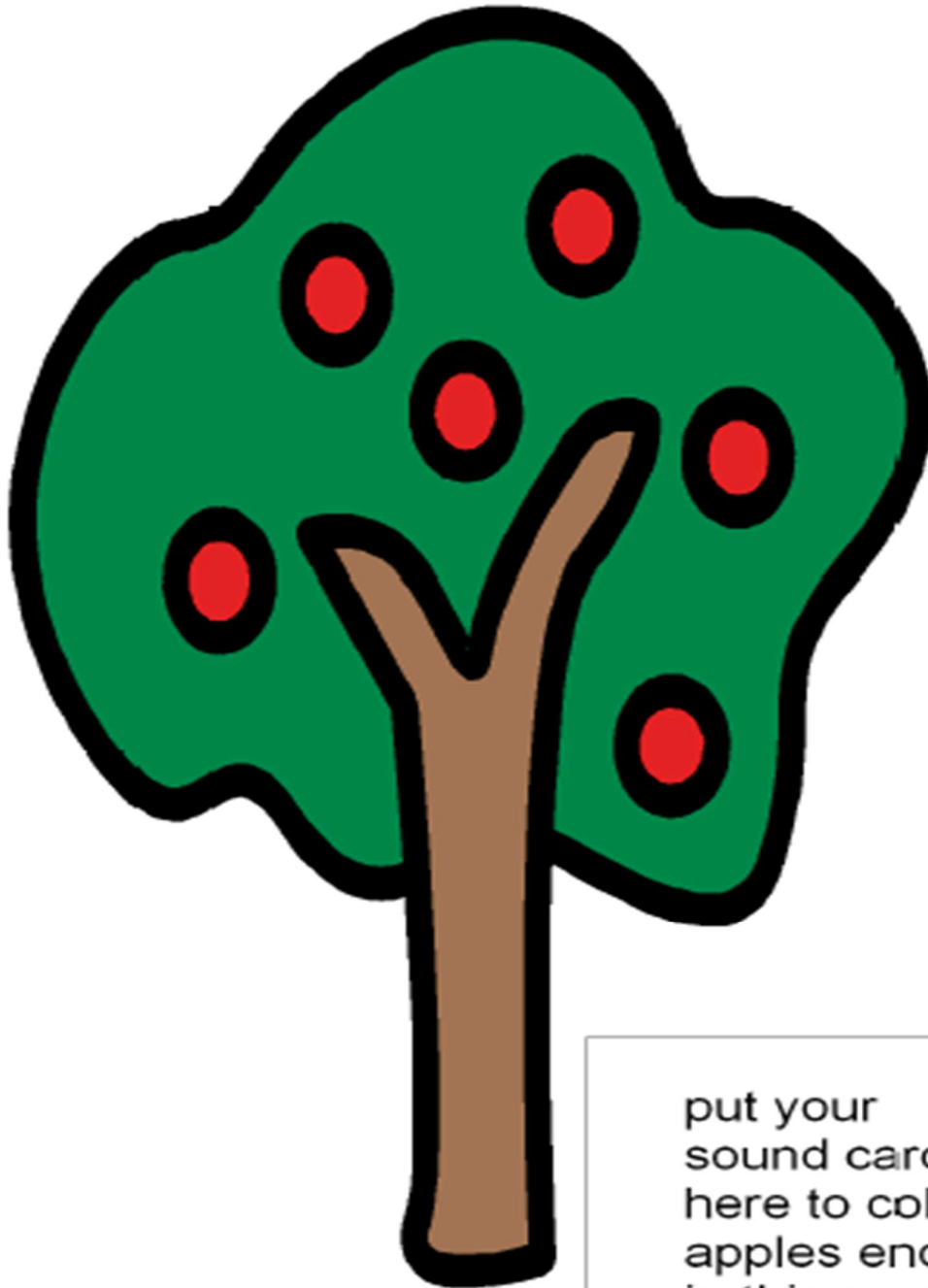
How to Play the Apple Tree Final Sound Sorting Game

- 1) Choose 2 sounds to practise. These are the **target sounds** e.g. k and g. Your therapist will have let you know the sounds you need to practice with your child.
- 2) Start with two apple trees. When your child gets better you might use 3 or more trees. You use one tree for each sound they are practising.
- 3) Write a target sound on a tree
- 4) Cut out the “apples” pictures. Each has a picture of a word on it. Each word will end with one of the target sounds. Put them face down on the table.
- 5) Take turns to choose an “apple”. Say the word and stress the final sound.
- 6) Ask the child, “What sound did you hear at the end?” Ask them to put the apple on the right tree.
- 7) Praise your child when they choose the right apple tree. If they choose the wrong tree, say the word again for the child to hear.

To make the game harder:

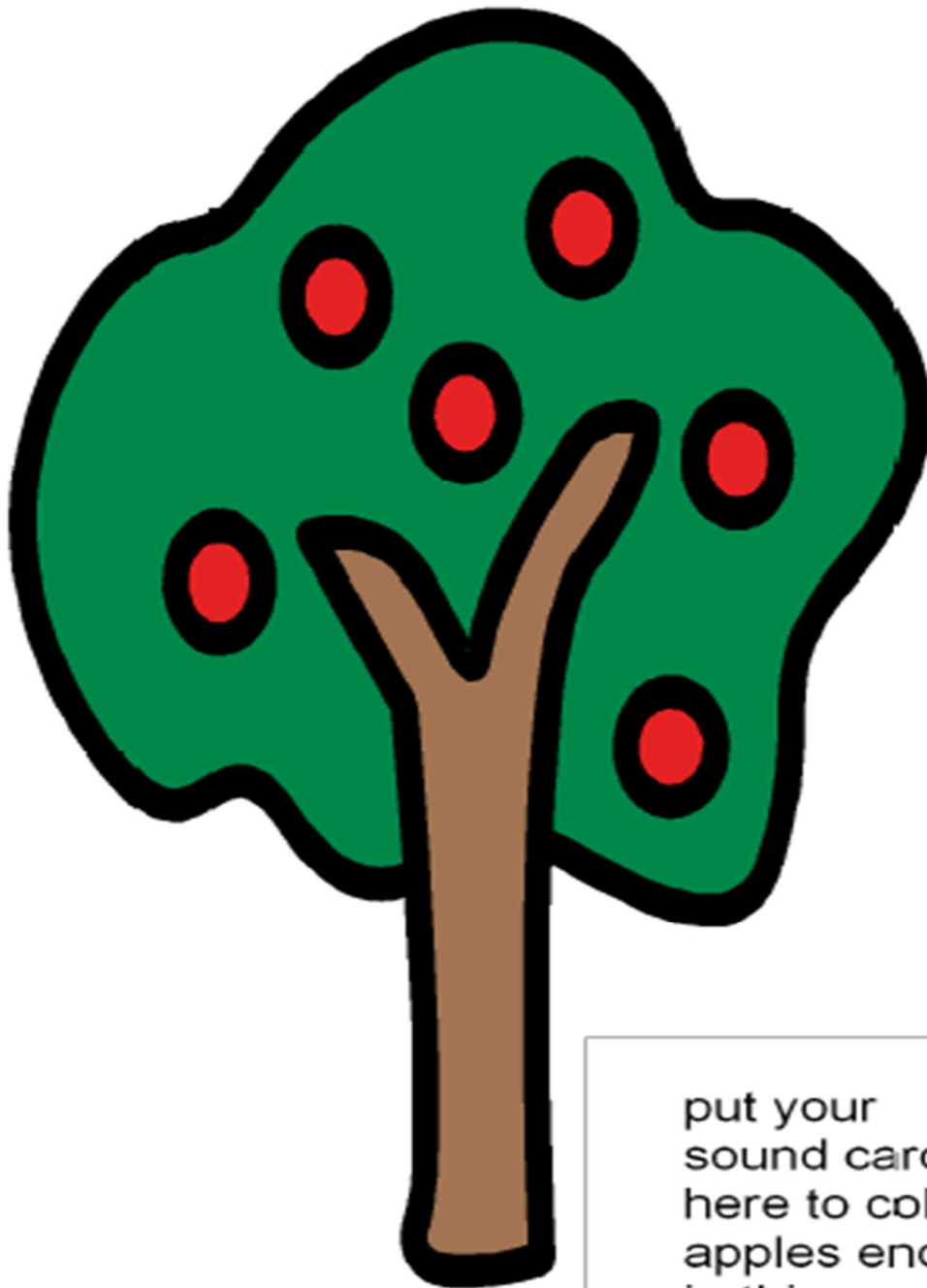
- 1) Do not stress the last sound.
- 2) Use 3 or more different sounds.
- 3) Ask the child to say the word on the apple. Only do this if you know the child can say the end sound correctly.





put your
sound card
here to collect
apples ending
in this sound

www.southwestyorkshire.nhs.uk



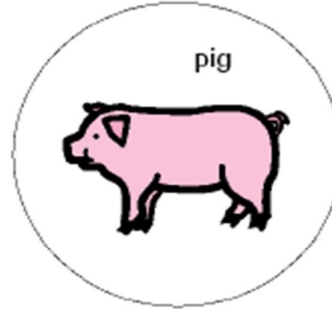
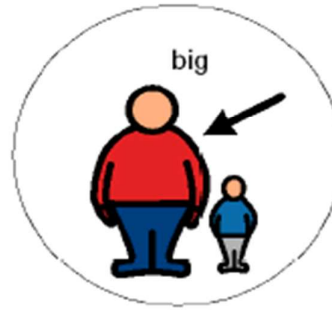
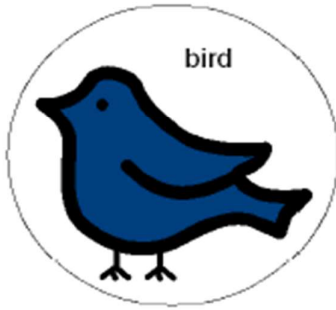
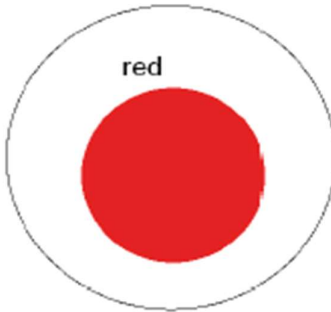
put your
sound card
here to collect
apples ending
in this sound



words ending in d

words ending in g

www.southwestyorkshire.nhs.uk



words ending in d

words ending in g

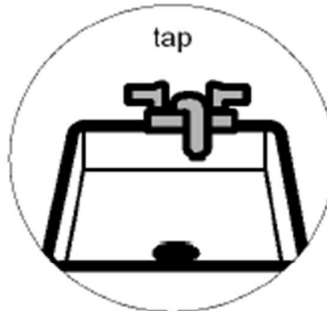
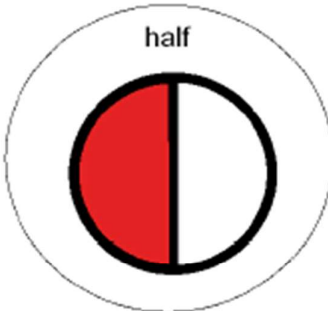
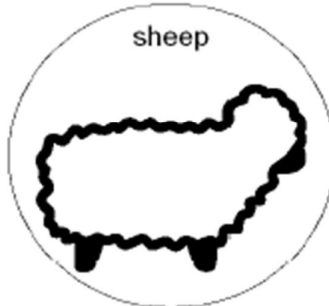
www.southwestyorkshire.nhs.uk

The content of this document is the property of swyt and is supplied in confidence.
No part of this document or its content shall be reproduced, published or disclosed to a third party without prior written permission of swyt



words ending with f

words ending with p



words ending with f

words ending with p



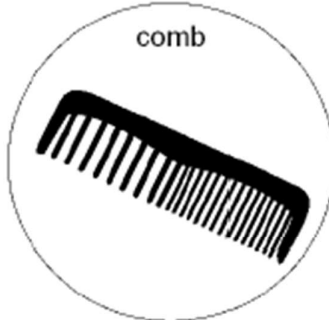
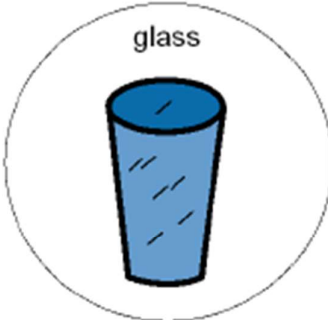
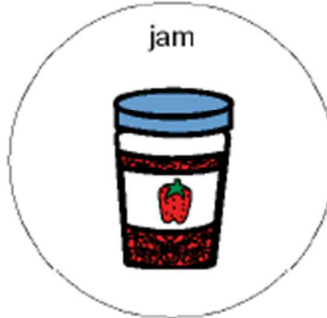
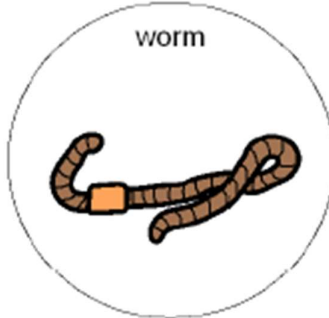
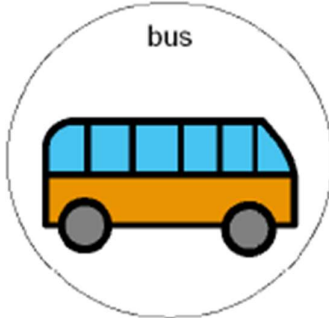
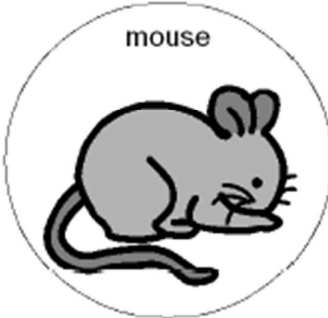
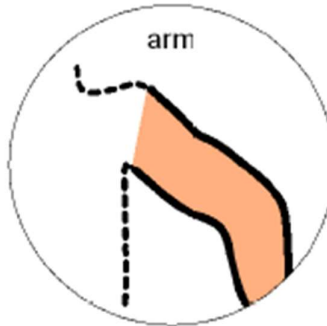
U:\Parent Phonology Workshops\final sounds\apples s m

words ending with s

words ending with m

www.southwestyorkshire.nhs.uk

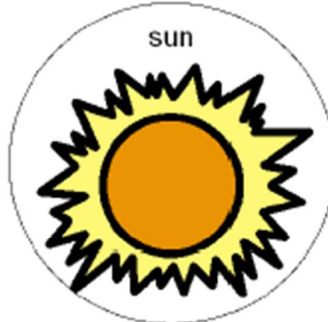
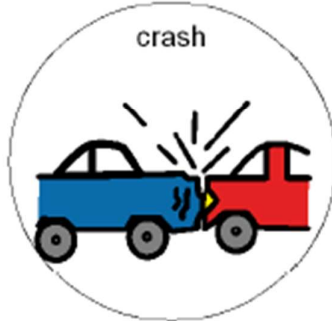
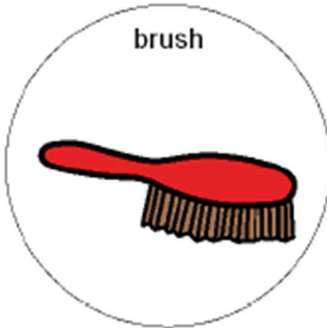
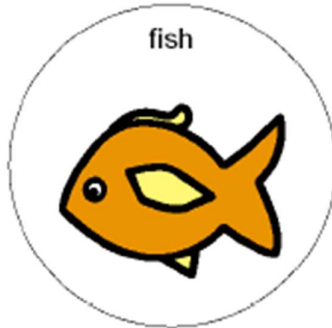
The content of this document is the property of swyt and is supplied in confidence.
No part of this document or its content shall be reproduced, published or disclosed to a third party without prior written permission of swyt



words ending with s

words ending with m

www.southwestyorkshire.nhs.uk



words ending with sh

words ending with n



words ending in t

words ending in k/c



words ending in t

words ending in k/c

www.southwestyorkshire.nhs.uk

The content of this document is the property of swyt and is supplied in confidence.
No part of this document or its content shall be reproduced, published or disclosed to a third party without prior written permission of swyt