



Mental health services for older people.

What do you think of our ideas?

A consultation by:

South West Yorkshire Partnership NHS Foundation Trust
NHS West Yorkshire Integrated Care Board

How to do this survey



By post:

Ask a member of staff to give you an envelope addressed to:



Communications and Involvement - Block 6

South West Yorkshire Partnership NHS
Foundation Trust
Fieldhead Hospital
Ouchthorpe Lane
Wakefield
WF1 3SP



Get help to take part:

Contact us for help, or to ask for this information in another format or language.



Phone: 0800 587 2108

Email: opsconsultation@swyt.nhs.uk

About you



1. I am:

- ☐ a person with dementia
- ☐ a person with mental health needs
- ☐ caring for someone with dementia
- ☐ caring for someone with mental health needs
- ☐ working in older people's mental health services
- ☐ working in healthcare
- ☐ working in social care
- ☐ working for a charity or community group
- ☐ a Governor of South West Yorkshire Partnership Foundation Trust
- ☐ other - tell us below

2. Where did you learn about the changes we want to make?



☐ the full consultation document

or...

☐ the summary

☐ Easy Read version

☐ public meeting

☐ told by a local organisation

☐ told by an advocate

☐ website

☐ film / animation

☐ other - tell us below

3. Do you need more information about the changes?



☐ yes

☐ no

☐ not sure

About the changes

4. Imagine an older person who is in hospital for help with their mental health.

Tick the 3 most important things below:



☐ they should be in a hospital which is close to home



☐ they should only go to hospital when they need specialist care

☐ people with dementia should not be in the same ward as people with mental health needs

☐ people should be safe and get good support

☐ only move people to another ward if it is essential for giving them good care

☐ the person should know the staff who are looking after them



1_a

5. Look at the consultation document.

Find option 1a and answer these questions:

a. Option 1a will improve care for people with dementia.


☐

yes

☐

no

☐

not sure

b. Option 1a will improve care for people who need help with their mental health.


☐

yes

☐

no

☐

not sure

c. Option 1a will mean we are spending our money in the best way possible.


☐

yes

☐

no

☐

not sure



6. Look at the consultation document.

Find option 1b and answer these questions:

a. Option 1b will improve care for people with dementia.

☐

yes

☐

no

☐

not sure



b. Option 1b will improve care for people who need help with their mental health.

☐

yes

☐

no

☐

not sure



c. Option 1b will mean we are spending our money in the best way possible.

☐

yes

☐

no

☐

not sure



2

7. Look at the consultation document.

Find option 2 and answer these questions:

a. Option 2 will improve care for people with dementia.


☐

yes

☐

no

☐

not sure

b. Option 2 will improve care for people who need help with their mental health.


☐

yes

☐

no

☐

not sure

c. Option 2 will mean we are spending our money in the best way possible.


☐

yes

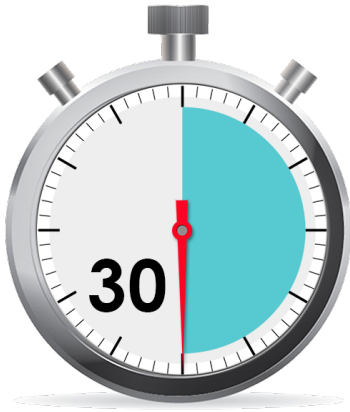
☐

no

☐

not sure

Travel



8. How long would you be happy to travel if you needed to go to hospital?

☐

less than 30 minutes

☐

30 minutes to 1 hour

☐

over one hour

9. How do you travel?
You can tick more than one box.

☐

drive a petrol or diesel car

☐

drive an electric car

☐

passenger in a car

☐

taxi

☐

bus or train

☐

patient transport

☐

walk or cycle

☐

motorbike or moped

other:



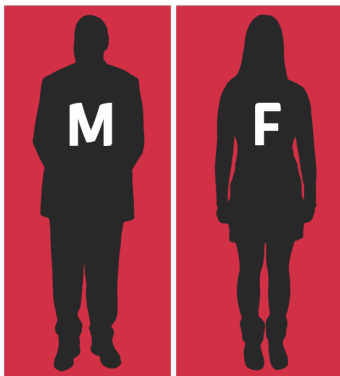
10. Is there anything else you would like to say, about any of the questions so far?

More information about you

These questions help us to find out if we are treating everyone fairly and equally. You do not have to answer all of them.



What is the first part of your postcode?
For example, **WF13**.



What is your gender?
For example: man, woman, non-binary, trans



How old are you?



Which country were you born in?

☐

United Kingdom

☐

Other - tell us below



What is your ethnic group?

☐

Asian or Asian British

☐

Black, Black British, Carribean, African

☐

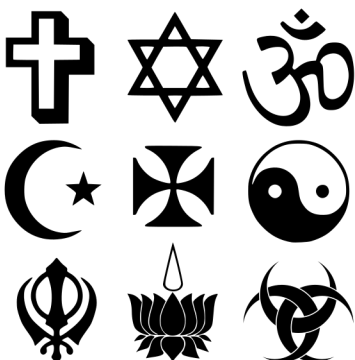
Mixed

☐

White

☐

Other - tell us below



What is your religion?

Tell us below



Do you describe yourself as disabled?

☐ yes

☐ no



Do you have any long-term health problems?

☐ yes

☐ no



Are you a carer?

☐ yes

☐ no



Are you pregnant, or have you given birth in the last year?

☐ yes

☐ no



Do you have any children under 18 years?

☐ yes

☐ no



The amount of money you have can affect how healthy you are.

Which statement describes how much money you have?



☐ **Comfortable**
I have more than enough money for my food and bills, with **some** left over.

☐ **Getting by**
I have just enough money for food and bills, with **nothing** left over.



☐ **Struggling**
I do not have enough money for food and bills. I sometimes have **no money** at all.

☐ **I don't know**



Thank you for filling in this survey!